

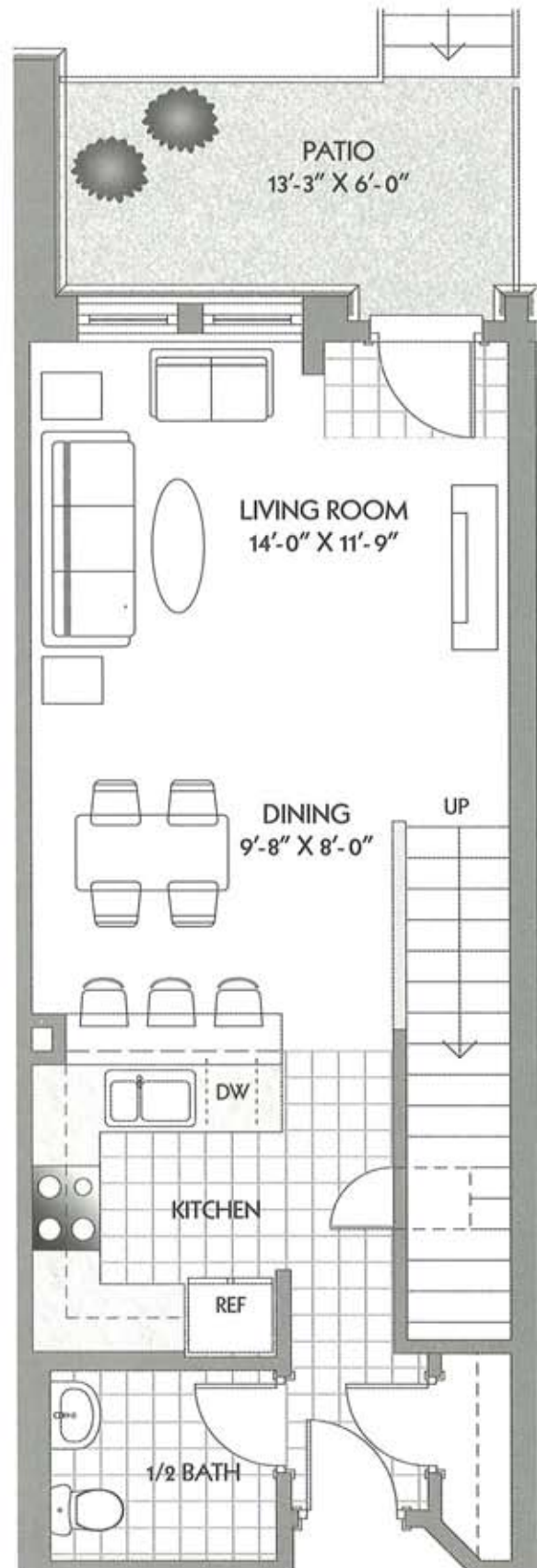
## Loft Suburban Flat

2 Bed + Loft  
1 1/2 Bath

1,182-1,275 Sq. Ft.

- Brick/Stucco Urban Style Exterior.
- Heated, Secured Underground Parking.
- 9 Foot Ceilings and Oversized Windows Throughout.
- Private Patio.
- Natural Gas Grill Hookup.
- 12-inch "Quiet Wall" and 24-inch "Quiet Ceiling" Construction.
- Full GE Appliance Package Including Extra Capacity Front-Load Washer and Dryer.
- Separate High-Efficiency TRANE Air Conditioning and Heating Systems.
- High-Tech Wiring Package.

### FIRST FLOOR



Artist's Rendition: Optional Features May Be Depicted.

Dimensions are for interior walls and are approximate. Designs, specifications, features, and prices may be subject to change without notice.



1 block East of Nicollet on Burnsville Parkway • [UptownLanding.com](http://UptownLanding.com)

